



BEAUTY RANGE CATALOG

PADS & SHEET MASKS



eurowipes
ANJAC

TABLE OF CONTENTS

01 MARKET OVERVIEW

02 AT EUROWIPES

03 OUR RANGE



01 MARKET OVERVIEW

BEAUTY FACIAL RITUAL

SHEET MASKS



Sheet masks are single-use facial treatments made of a fabric sheet soaked in active ingredients, designed to deliver skin benefits in a convenient format.

TONER PADS



Toner pads are cotton pads pre-soaked in active lotions, designed for gentle exfoliation, hydration, or targeted skin benefits with easy, mess-free application.

20-49 years

Young Consumers:
A lever to attract Millennials

USD 363.7 million

of sheet masks in 2024

WHY CONSUMERS CHOOSE THEM

- **Instant efficacy:** immediate, visible results
- **Targeted action:** tailored solutions for specific skin concerns
- **Self-care:** a ritual of indulgence and me-time

As essentials of the **K-Beauty** routine, sheet masks and pads embody a skincare trend that surged by **28%** in France from 2024 to 2025.

02 AT EUROWIPES

OUR EXPERTISE:



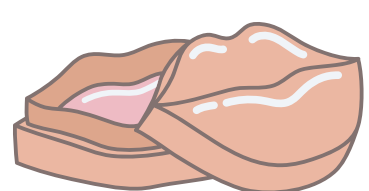
HIGHLY NATURAL FORMULAS

Formulas with over 95% natural origin ingredients (according to ISO 16128 or COSMOS standards)



WIDE RANGE OF SUPPORTS

Organic Cotton, Lyocell, Lyocell Skin Biocellulose, Hemp



VARIOUS CUT-OUTS

Face, under-eyes patches, neck, belly, lips areas



INNOVATIVE/EXCLUSIVE TECHNOLOGIES

Bi-compartment system for a freshly activated sensation
Patented Dry-soaking process



EXPERTISE IN ECO-DESIGN

Mask certified OK home compost
Sustainable recyclable paper packaging

OUR NATURAL ORIGIN & COSMOS-CERTIFIABLE FORMULAS:



Formulas up to 99.5% ingredients of natural origin



100% of natural and plant origin



Claims that meet key consumer needs

OUR MAIN INGREDIENTS



Red Gingseng



Hyaluronic Acid



Aloe Vera



Blackcurrant Seed Oil



Green Tea



Algae & Aquatic Flowers



Caffeine Extract



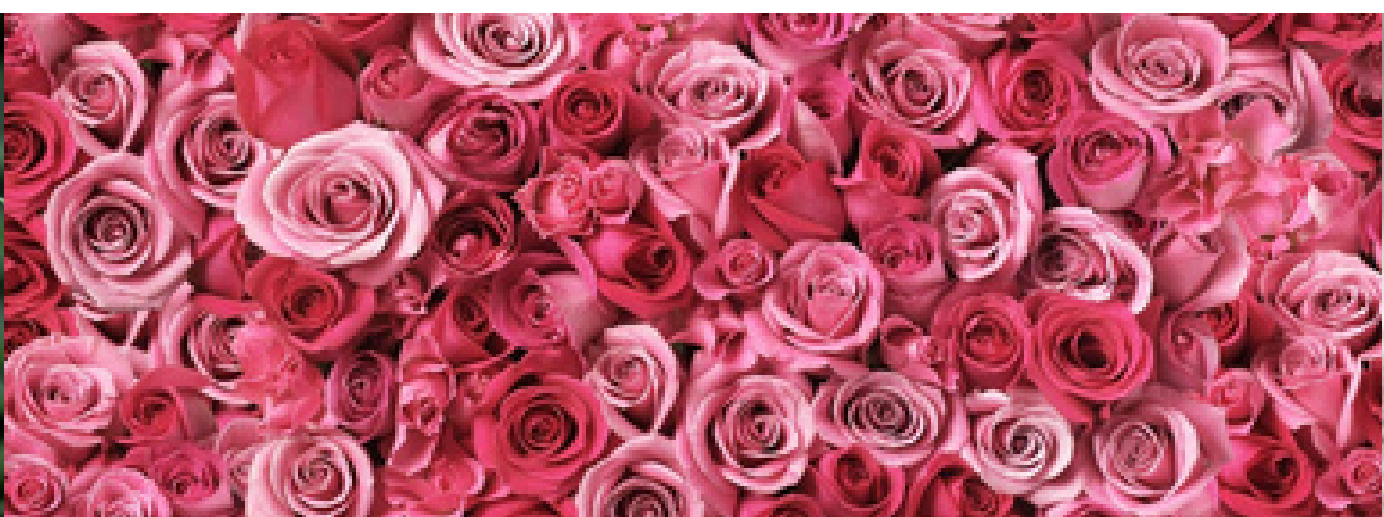
Balloon Wine Extract



Jojoba



CBD



Rose Floral Water



Organic Virgin Hemp Seed Oil



Harvested Kernel Corn



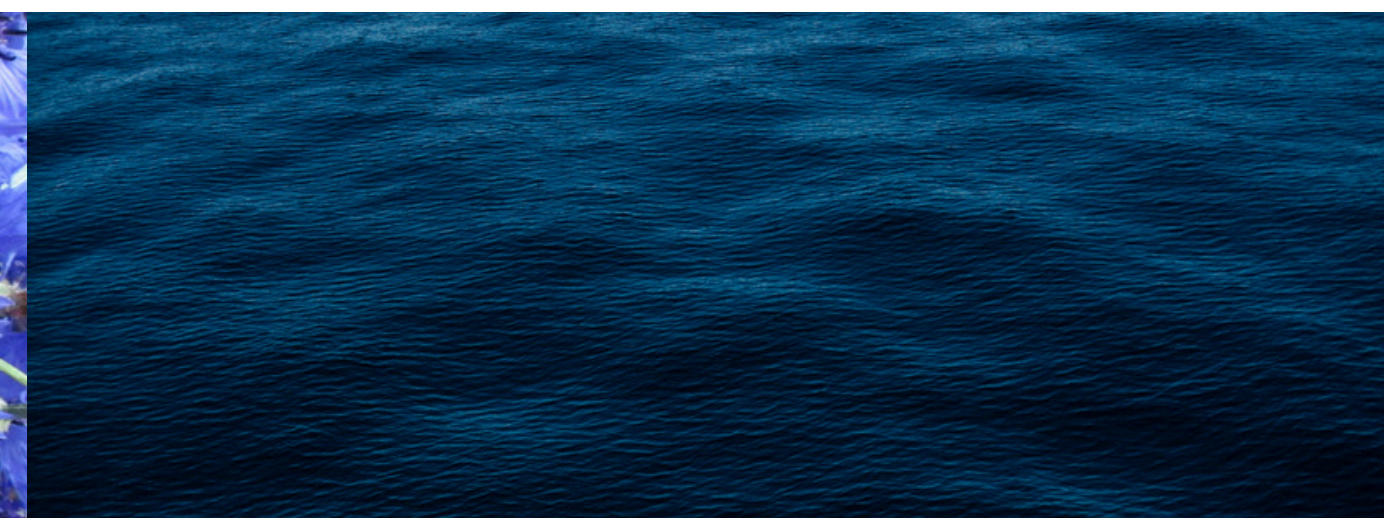
Arnica Montana



Maracuja Oil



Cornflower



Iroise Sea Marine's
Microorganism
Plankton Extract



Arctic Wild Berries

Other ingredients and actives can be added upon request to fit your needs.

03. OUR RANGE

IT'S YOUR TIME TO CHOOSE!

DESIGN YOUR PRODUCT

IN 4 STEPS

1. FORMAT

Identify the **product format** that best fits your brand, a full-face sheet mask or targeted pads for specific areas, both designed in line with consumer expectations and market trends.

2. BENEFITS

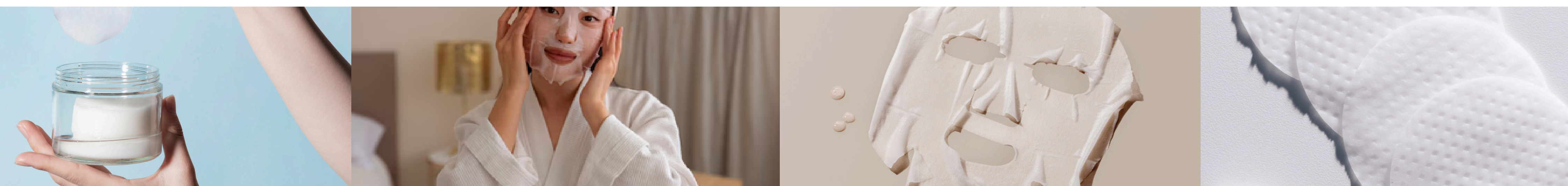
Select the **targeted skincare claims** (hydration, anti-aging, radiance, soothing, detox, etc.) and we will integrate the most relevant active ingredients to meet your brief.

3. SUPPORT

Choose your mask support from a wide palette of materials (cellulose, lyocell, organic cotton, hemp, and more), tailored to meet both your **sustainable** and **sensorial** needs.

4. PACKAGING

Adapt your product to your brand identity with a **wide range of options**, single-dose sachets, jars, including eco-responsible and premium packagings.

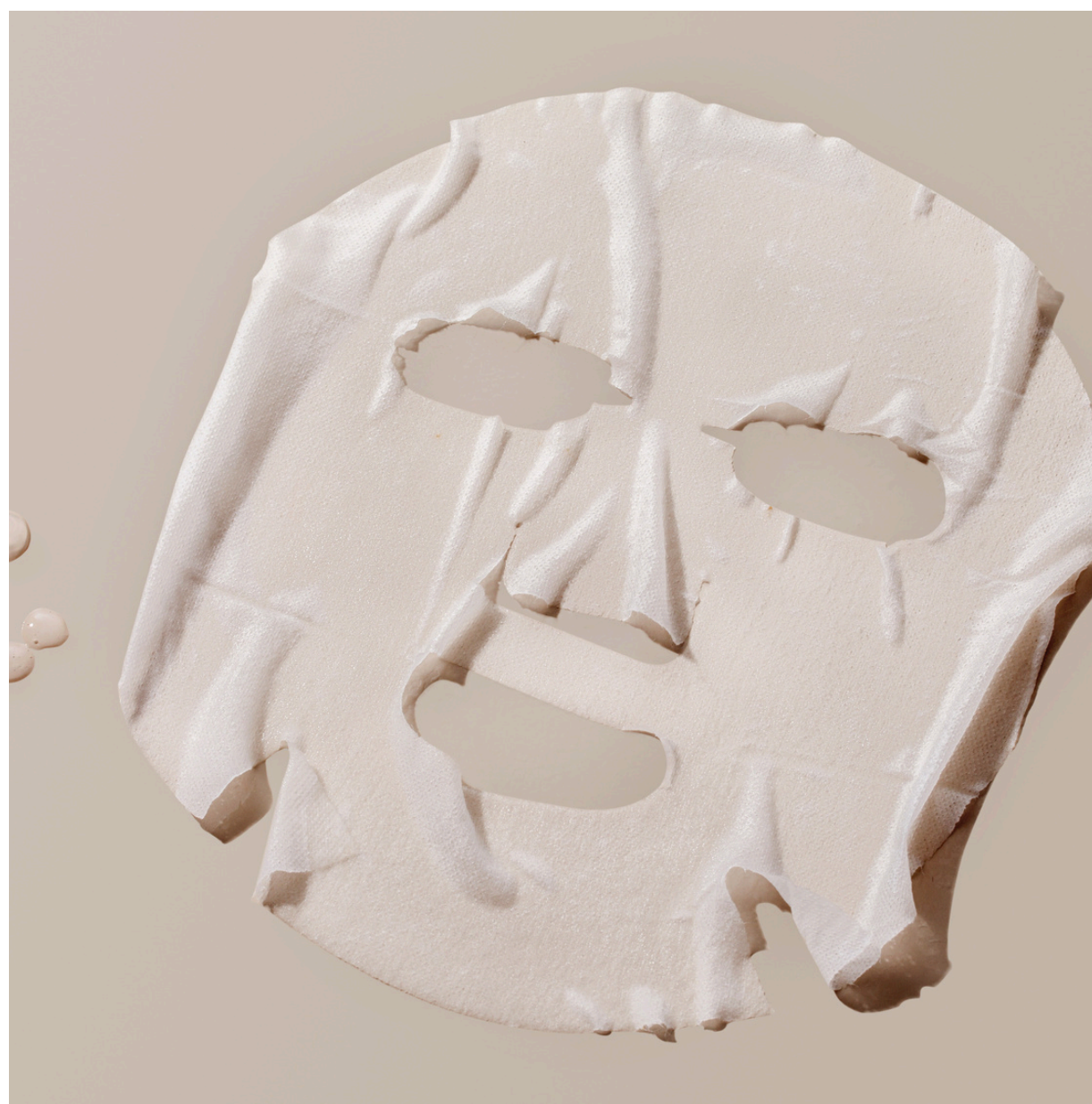


1. FORMAT

Let us know your **preferred format**, whether a full-face **sheet mask** or **targeted pads** for specific areas.

SHEET MASK

A full-face format for overall skin action and an immersive care experience.



TONER PADS

A targeted format for localized care, offering precision and everyday convenience.



2.CLAIMS

Start by selecting the **key claims** that will shape your sheet mask concept.

MOISTURIZING

Delivers **deep and lasting hydration** to restore skin comfort.
Reveal your skin's natural suppleness.

SKIN RADIANCE

Boosts luminosity and **evens out the complexion** for a healthy, glowy appearance.

SKIN LONGEVITY

Supports **long-term skin vitality** with anti-aging actives that help preserve **firmness** and **elasticity**.

DERMOCOSMETICS

High-tolerance formulas inspired by dermatology, helping to reinforce the **skin barrier** while addressing **acne-prone** and **sensitive skin**.

OUR FORMULAS

MOISTURIZING

COSMOS HYDRATING & RELAXING

R&D 2019-39/B08-1

MOISTURIZING - HYDRATING

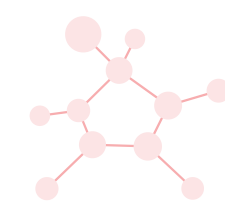
- Moisturizes and soothes the skin
- Provides a relaxing effect
- Pleasant fragrance



Brown Algae



Aloe Vera



Sodium Hyaluronate



EFFICACY

- A biotechnological active: activates the adherence of water to the skin and produces a long-term hydrating effect
- Aloe Vera and Hyaluronic acid: hydrating
- Ylang-Ylang essential oil: recognized for its relaxing virtues
- Thickening agent: offers a pleasant sensation

HIGH TOLERANCE COSMOS HYDRATING

R&D 2018-18/D04-8

MOISTURIZING - HYDRATING - SOOTHING

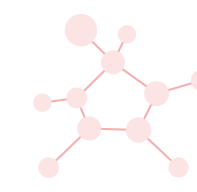
- Moisturizes and softens the skin
- Instant hydration and long term benefits
- High tolerance, perfectly adapted for sensitive skin



Brown Algae



Aloe Vera

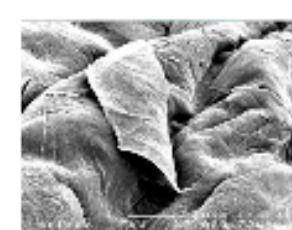


Sodium Hyaluronate



EFFICACY

With a biotechnological active ingredient specifically used for hydration.



Before applying



After applying

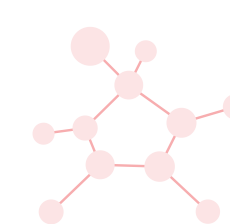
- It activates the fixing of water to the Stratum Corneum, the outer layer of the epidermis
- It improves hydration and provides a long-term hydrating effect for the skin

AFTER SUN RECOVERY

R&D 2020-26/A16

SOOTHING - HYDRATING

- After sun care : deeply moisturizes
- Soothes and calms the skin
- The mask can be placed in the fridge to maximise the cooling effect



Sodium Hyaluronate



Harvested kernel corn



EFFICACY

- Liposomally encapsulated active: reduces fine lines caused by sun exposure
- Natural hydration booster: provides significant hydration on dry skin due to sun exposure, strengthens skin barrier function and reduces skin itching



OUR FORMULAS

SKIN RADIANCE

HIGH TOLERANCE COSMOS ANTI-FATIGUE

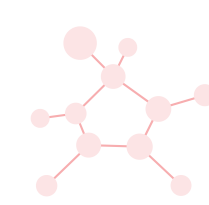
R&D 2018-18/D07-3-1

SKIN RADIANCE - ANTI-FATIGUE

- Tones the skin for a radiant look
- The skin is smoother, softer and suppler for an appearance with less drawn features



Algae



Sodium Hyaluronate



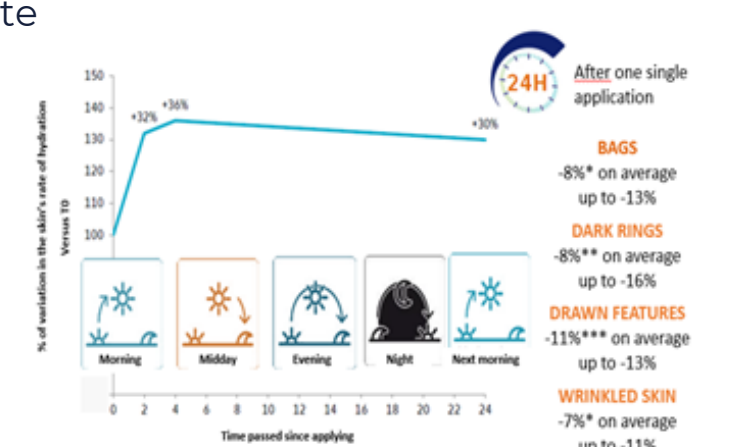
Aloe Vera



Rose Floral Water

EFFICACY

- Anti-fatigue active: offers instant hydrating and eradicates signs of tiredness
- Active from microalgae: protects the skin from the effects of UVs and increases the skin's density by accelerating cells regeneration



HIGH TOLERANCE COSMOS DETOXIFYING & REVITALIZING

1408243S - 2018-18/D06-3-1

DETOXIFYING - REVITALIZING

- Revitalizes and smooths: Leaves skin radiant, smoother, and pores visibly tightened
- Decreases the level of sebum on the surface of the skin



Brown Algae



Cornflower



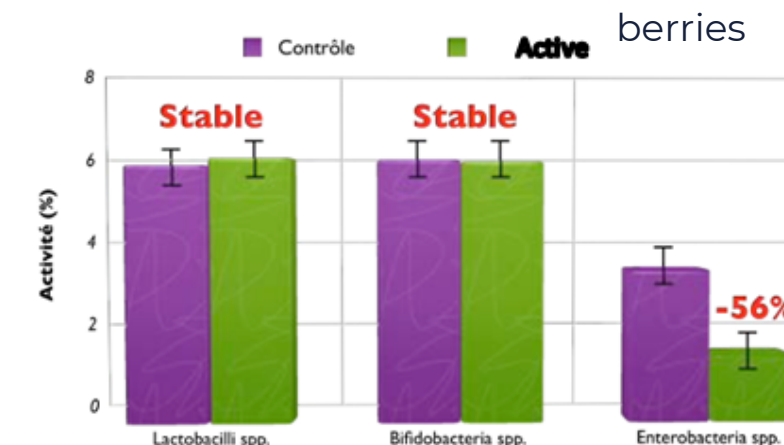
Aloe Vera



Arctic wild berries

EFFICACY

The active regulates the flora by inhibiting the growth of pathogenic bacteria and ensuring the proliferation of favourable bacteria.



RED GINSENG BASED

R&D 2022-02/A05-1

SKIN RADIANCE - REVITALIZING

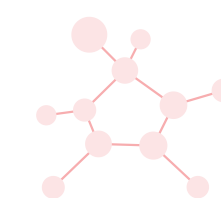
- Boosts the complexion's radiance
- Activates collagen synthesis, and boosts cellular energy for anti-wrinkle and revitalizing activity



Red Ginseng



Aloe Vera



Sodium Hyaluronate

EFFICACY

- Red ginseng based active: anti-wrinkle and revitalizing benefits
- Complexion's radiance boosting active
- Aloe Vera and Hyaluronic Acid: hydrating



CBD BASED

R&D 2019-57/A19-1

RADIANCE - SOOTHING - ANTI-OXYDANT

- Hydrating and soothing
- Antioxidant activity
- Radiance boosting



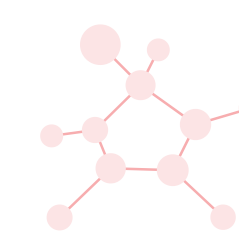
CBD



Organic virgin hemp seed oil



Aloe Vera



Sodium Hyaluronate

EFFICACY

CBD: known for antioxidant, radiance boosting, anti-ageing, soothing, and sebo-regulating properties



ANTI-POLLUTION AND ANTI-BLUE LIGHT

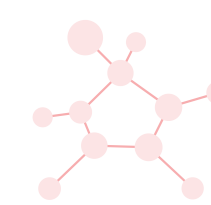
R&D 2021-07/A19-1

SKIN RADIANCE

- For a radiant & even complexion
- Helps to reduce effects of lights & pollutants on skin



Aloe Vera



Sodium Hyaluronate

EFFICACY

- Natural shield forming active: helps reducing the surface and the intensity of pigment spots
- Cellular energy booster: activates the cellular detoxication process against oxidant stress caused by pollutants



OUR FORMULAS

SKIN LONGEVITY

HIGH TOLERANCE COSMOS ANTI-AGEING

R&D 2018-18/D03-3-1

ANTI-AGEING

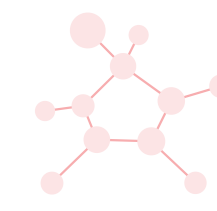
- Reduces wrinkles depth
- The skin is smoothed and toned
- High tolerance, suitable for sensitive skin



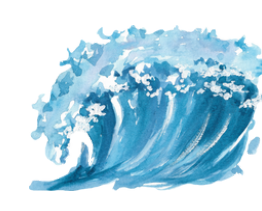
Aquatic Flowers



Aloe Vera



Sodium Hyaluronate

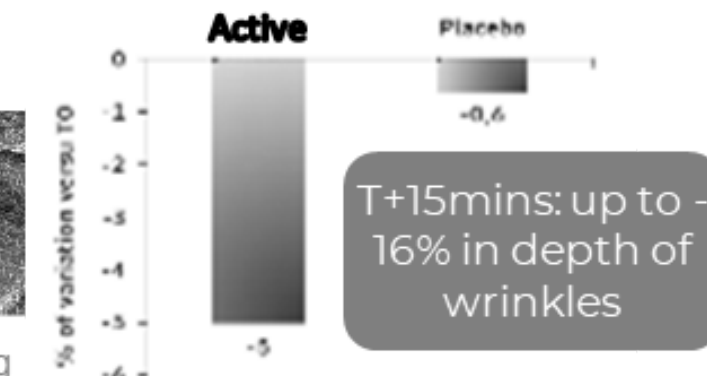
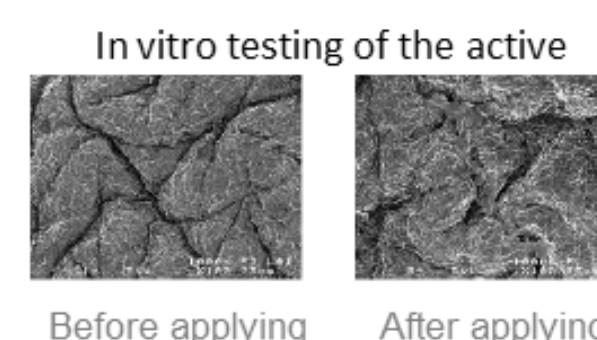


Iroise sea marines' microorganisms



EFFICACY

Anti-ageing active with clinically proven effectiveness.



DEEPLY DEHYDRATED AND WRINKLED SKIN

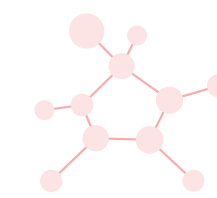
R&D 2020-26/A06-1

MOISTURIZING - ANTI-WRINKLES

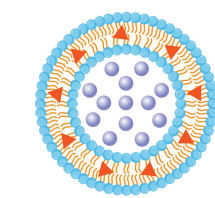
- Hydrates very dry and mature skin
- Smoothes fines lines
- Helps soothing feelings of skin discomfort



Harvested kernel corn



Sodium Hyaluronate



Anti-wrinkle liposomes



EFFICACY

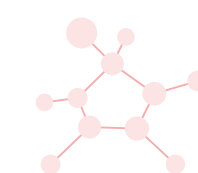
- Liposomally encapsulated active: brings firmness, tonicity and smoothing effect on wrinkles and fine lines
- Hydration booster actives: reduce itching caused by drying and improve skin barrier function.

MENOPAUSE SKINS

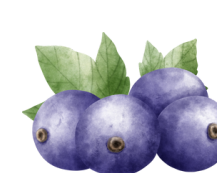
R&D 2021-29/B03-1

SKIN RADIANCE - SOOTHING - MOISTURIZING

- Hydrates and soothes the skin
- Skin barrier restoring power
- Deeply nourishes and strengthens the skin
- Fragrance free



Sodium Hyaluronate



Blackcurrant seed oil



Balloon vine extract



Sunflower oil concentrate



Aloe Vera

EFFICACY

In use test available: 10 women aged 46-70 with sensitive and dry skin with an atopic tendency on the face.

ANTI-DARK SPOTS & HYPER PIGMENTATION

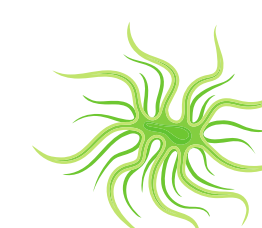
R&D 2022-16/A05-1

ANTI-DARK SPOTS - HYDRATING

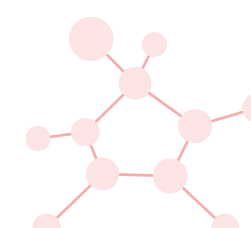
- Reduces age spots and preserves the natural skin tone
- Moisturizes the skin



Aloe Vera



Plankton extract



Sodium Hyaluronate



EFFICACY

Plankton extract from microalgae: brightens, evens out the skin tone by 11,5% after 60 days and reduces skin age spots in 28 days thanks to its melanin modulation (In vivo tested on 30 volunteers).

OUR FORMULAS

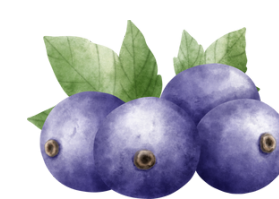
DERMOCOSMETICS

ATOPIC PRONE SKIN

R&D 2021-29/B03-1

SOOTHING - NOURISHING - MOISTURIZING

- Hydrates and soothes the skin
- Skin barrier restoring power, for a deeply nourished and strengthened skin
- Fragrance free



Blackcurrant seed oil



Balloon vine extract



Sunflower oil concentrate



Aloe Vera

EFFICACY

Natural complex: reduces itching, supports the recovery of the skin barrier, significantly improves the atopic skin conditions



COSMOS ANTI-REDNESS & REPAIRING

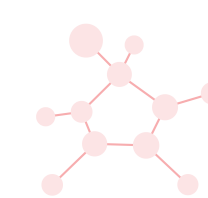
R&D 2020-05/A13-1

ANTI-REDNESS - TONE CORRECTING

- Improves the skin texture and the evenness of the complexion
- Supports the skin's natural barrier and soothes visible redness
- Provides instant comfort with a refreshing effect



Aloe Vera



Sodium Hyaluronate

EFFICACY

- Exopolysaccharide: helps to reduce skin redness and improves skin evenness and complexion
- Aloe Vera: moisturising power
- Hyaluronic acid: forms a non-occlusive barrier protecting the skin from dehydration
- Thickening agent: offers a pleasant sensation and helps fix moisture in the skin



ULTRA REPAIRING

R&D 2023-06/F05-1

AFTER AESTHETIC TREATMENTS/PROCEDURES

- Supports skin regeneration
- Moisturizes and soothes the skin
- Soothes feelings of tightness



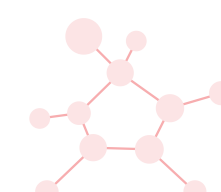
Aloe Vera



Arnica Montana



Maracuja Oil



Sodium Hyaluronate



ORGANIC PREBIOTIC

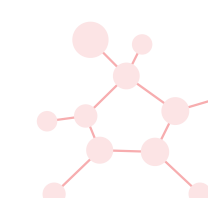
R&D 2020-22/A24-1

SKIN FIRMNESS - REBALANCES SKIN MICROBIOME - MOISTURIZING

- Helps maintaining a healthy skin microbiome while providing hydration
- Helps plumping, protecting and softening the skin



Aloe Vera



Sodium Hyaluronate

EFFICACY

- Prebiotic active well suited for sheet mask application: high performance after 15mn treatment only
- Improvement +14% in skin hydration, +16 % in elasticity, +13 % in firmness, +19 % in visco-elasticity, +11 % in smoothness, +10 % in wrinkle reduction.



3.SUPPORT

Then, choose the **support of your mask**, selecting the texture or material that best delivers your formula and enhances the consumer experience.

ORGANIC COTTON

Natural softness, timeless comfort.
Cotton wraps the skin in **gentle care**.



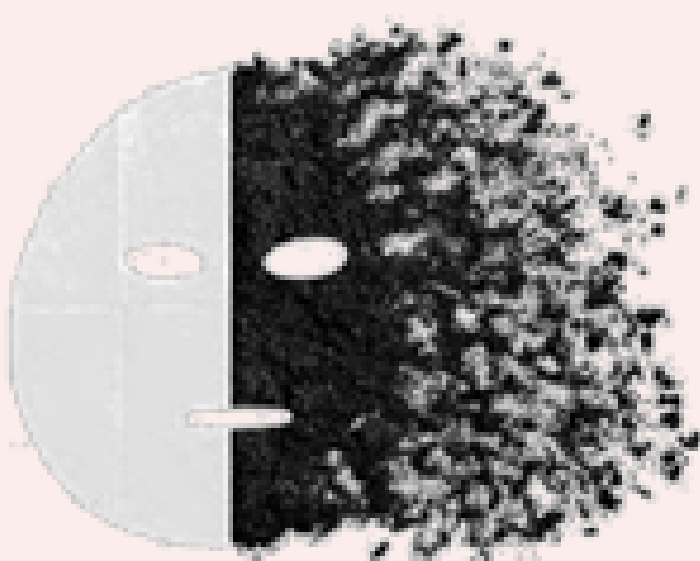
LYOCELL SKIN

A specialized form of Lyocell designed to provide an **ultra-soft**, second-skin feel. it offers **hypoallergenic** and **thermoregulating** properties.



HEMP

Naturally powerful and **eco-conscious**, hemp fabric combines: **strength, breathability, and sustainability.**



Our materials are **100% home-compostable**, certified "OK Home Compost", reflecting our expertise in eco-design.

4. PACKAGING

Finally, select the packaging that will contain your mask, either **single use sachet** or **multiple sheet masks in a jar**, reflecting your brand identity and ensuring **product protection**.

SINGLE USE SACHET



or



MULTIPLE PADS OR
SHEET MASKS IN A JAR



ALUMINIUM

High protection, premium finish aluminium protects your products with style.



PAPER-BASED

Lightweight, recyclable, responsible paper packaging for a natural impact.



MONO PE

Single-material, fully **recyclable** MonoPE leads the way to **circular beauty**.

Various **secondary packaging** solutions are possible, designed either for sustainability or to enhance consumer experience. They can also be combined to create multi-step routines with complementary benefits.



CUSTOMIZING SHAPE.

Design, customize and shape the product you need.
Explore **additional solutions** from our non-woven fabric range.

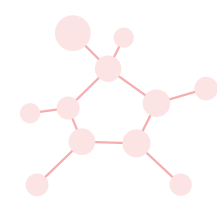
LIPS PATCH INNO 25-02

MOISTURIZING

- Moisturizes ; nourishes lips and gives a glossy effect
- Plumps lips within 15 minutes of use



Organic virgin cherry oil



Sodium Hyaluronate



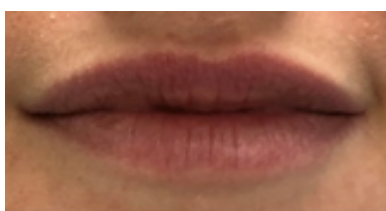
Alkanet Root



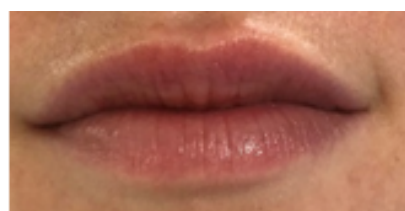
COSMOS NATURAL

EFFICACY

- Immediate plumping effect
- Moisturizing
- Anti-wrinkle when regularly used
- Efficient in only 15 minutes



Before



After 15 minutes

LYOCELL EYE CONTOUR PATCHES IN JAR INNO 21-12-3

SKIN RADIANCE - REVITALIZING

- Natural formula specially designed for anti-fatigue eye contour care, for a less tired and luminous look
- Contain an objectivated active that reduces bags and black cercles



Green tea



Aloe Vera



Caffeine



COSMOS NATURAL

EFFICACY

- After the first application: the eye contour is moisturized for 91% of panelists, smoothed and less tired for 68% of them.
- Fresh and soothing effect for 82% of them.
- After 28 days : puffiness and dark circles are improved for 73% of panelists. For them, the eye contour is radiant. Moreover, 59% of panelists noticed that fine lines were reduced.

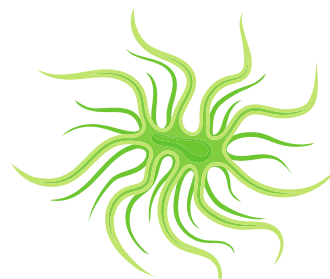
HYDRATING BELLY MASK INNO 24-01

PREGNANCY

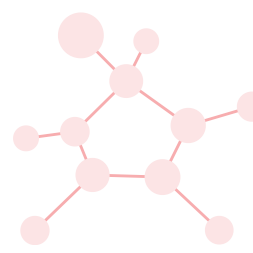
- Contains an active with proven effectiveness that reduces age spots and preserves the natural skin tone
- Moisturizes the skin
- Suitable for pregnant and breastfeeding women



Aloe Vera



Plankton exctract



Sodium Hyaluronate



COSMOS NATURAL

NECK SHEET MASK INNO 21-04

FIRMING EFFECT - MOISTURIZING

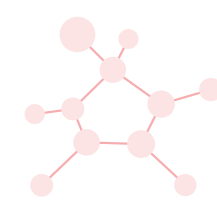
- Contains a firming active obtained from a by-product from jojoba, that improves skin elasticity and tones the skin
- Plumps and smooths the skin



Jojoba



Aloe Vera



Sodium Hyaluronate



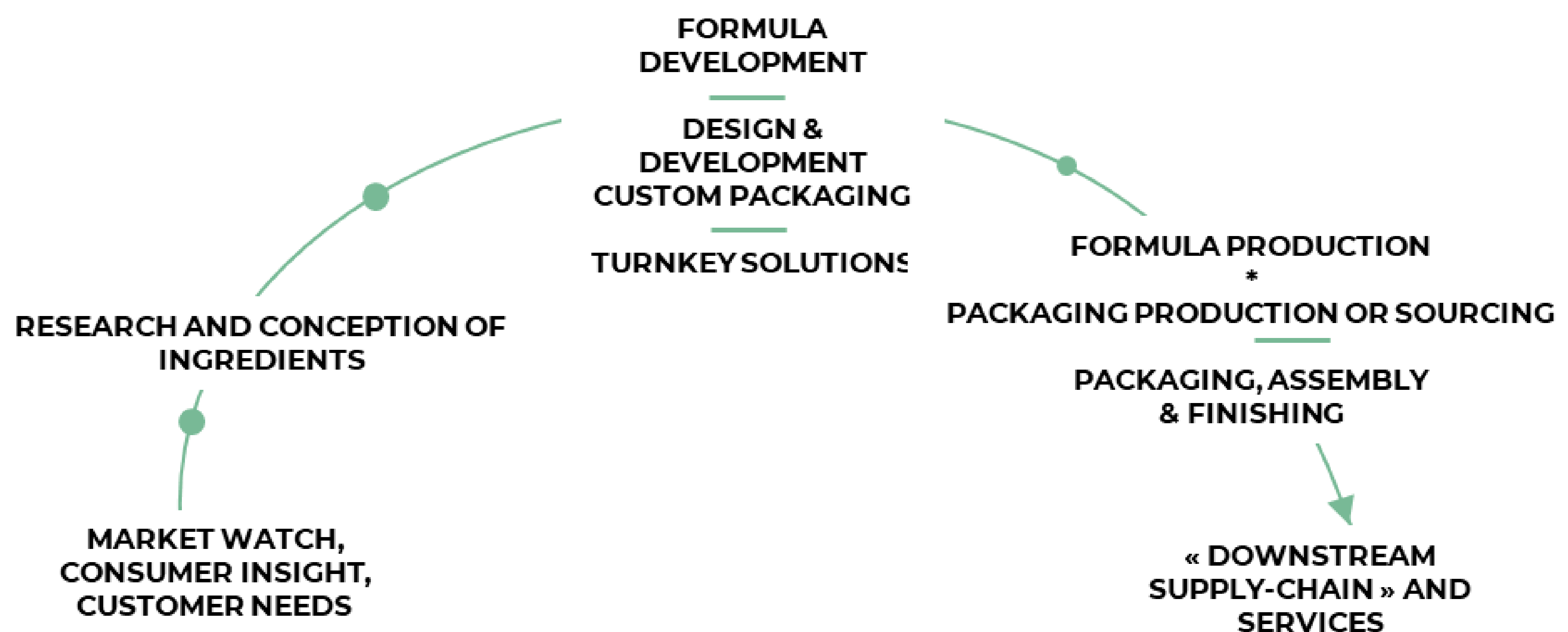
EFFICACY

- Contains a firming active obtained from a by-product from jojoba, that improves skin elasticity and tone the skin
- Aloe Vera, with moisturising power
- Hyaluronic acid, forming a non-occlusive barrier protecting the skin from dehydration

EUROWIPES

OFFERS YOU A **PERSONNALIZED SERVICE.**

*From the search for raw materials to the creation and manufacture of finished goods
Results & know-how along the entire value chain*



REGULATORY: efficiency, sensitivity, clinical tests, product files

SUPPLY CHAIN: post-project processes & services

QUALITY: GMP, certifications*, processes

PACKAGING: team of packaging engineers and designers

CUSTOM SOLUTIONS, TIME-TO-MARKET FROM 6 MONTHS
TURNKEY SOLUTIONS FROM 4 MONTHS

MANUFACTURE SITE

NOGENT LE ROTROU - FRANCE

Factory opening: 2001

Surface: 20 000 m² (prod + stockage)

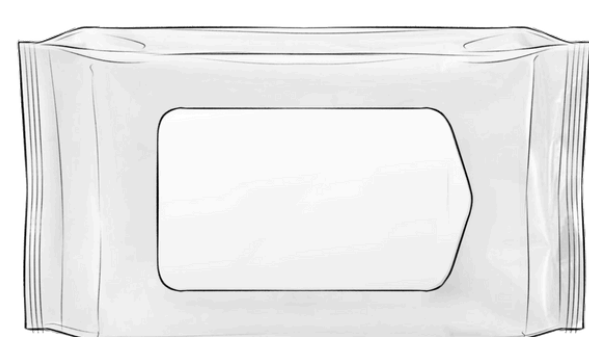
Activities: Formulation, Manufacturing & packaging



LABELS



EXPERTISE



Impregnated wipes



Sheet masks



Individually packaged
impregnated compresses



Impregnated pads



eurowipes
ANJAC

2 RUE DU GRAND CHAMP, 28400
NOGENT-LE-ROTRON

+33 2 37 54 50 70

www.eurowipes-anjac.com

contact@eurowipes.com